

5.1 $128 - 64 - 32 + 16 - 8 + 4 + 2 - 1$ $\checkmark 5$

5.2 \log smolom - ~~krasobna~~ ^{krasobna} ~~ball~~, +

neg qv boran - ~~ritet~~ ^{ritet} ~~menpog~~ +

na smole - ~~na~~ ^{na} ~~progo~~ ^{progo} ~~u normal~~ +

neg ~~neg~~ ^{neg} ~~progo~~ ^{progo} ~~u~~ ^u ~~normal~~ ^{normal} +

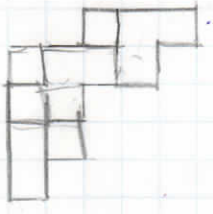
53

$150 \cdot 3 = 150$

2) $150 = 70 = 80$ progo-uzera za 1 na smen

Amber: uzera 1 na ~~set~~ ^{set} ~~smen~~ = 80 progo

3.4.



$\checkmark 5$

5.5 $1 + 3 + 3 + 3 + 3 + 3 \cdot 2 + 3 \cdot 2 + 3 \cdot 2 + 3 \cdot 2 + 2 \cdot 2 +$

$4 \cdot 3 \cdot 2 + 3 \cdot 2 = 2018$ $\checkmark 0$

$215 = 60\%$

5.1 $128 - 64 - 32 + 16 - 8 + 4 + 2 - 1 = 45$ $\neq 0$

5.2 $\text{Требуется} - \text{кучей} + \text{губки} - \text{Тетя} + \text{Пыль} + \text{сумка} - \text{универсала}$

ног $\text{шаров} - \text{Королева} + \text{Анна} - \text{Евгений} + \text{Алиса}$ $\neq 0$

5.3 $40 - 50 = 20$ $\neq 0$



5.5 $1 + 3 = 4$

$4 + 3 = 7$

$7 + 3 = 10$

$10 + 3 = 13$

$13 + 2 = 26$

$26 + 3 = 29$

$29 + 2 = 58$

$58 + 3 = 61$

$61 + 2 = 122$

$122 + 3 = 125$

$125 + 2 = 250$

$250 + 2 = 500$

$500 + 3 = 503$

$503 + 2 = 1006$

$1006 + 3 = 1009$

$1009 + 2 = 2018$

$\neq 0$

$2018 = 8090$

5.1

$128 - 64 - 32 + 16 - 8 + 4 + 2 - 1 = 45$ AS

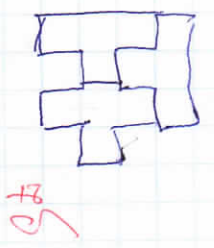
5.2

log negyurcui - nucep⁺, neg gubonow⁺
menyrajt⁺, ka. smawett⁺, umoyrawka⁺
neg smowow - wpaobkwa⁺ AS

5.3

$1) 40 - 50 = 20$ (ka) AS

5.4



5.5

A large section of the page is circled in blue ink. It contains several lines of mathematical expressions, many of which are crossed out with red lines. The expressions include terms like $(1-2) + 3(1-2) + 3(1-2) + 3(1-2)$ and $(1-2) + 3(1-2) + 3(1-2) + 3(1-2) + 3$. There are also some scribbles and other markings within the circle.

08052018

- $2018 : 2 = 1009$
- $1009 - 3 = 1006$
- $1006 : 2 = 503$
- $503 - 3 = 500$
- $500 : 2 = 250$
- $250 : 2 = 125$
- $125 - 3 = 122$
- $122 : 2 = 61$
- $61 - 3 = 58$
- $58 : 2 = 29$
- $29 - 3 = 26$
- $26 : 2 = 13$
- $13 - 3 = 10$
- $10 - 3 = 7$
- $7 - 3 = 4$
- $4 - 3 = 1$ AS

AS = 80%

5.1

$$128 - 64 - 32 + 16 - 8 + 4 + 2 - 1 = 45$$

45

5.2

ног. попул. (непр. +)

ног. габарит. (непр. +)

ног. смол. (непр. +)

ног. смол. (непр. +)

45

5.3

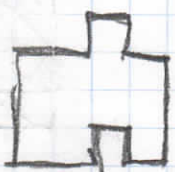
Латинские и латинские смол. 80 г/л

$$150 \cdot 3 = 150$$

$$2150 - 70 = 80 \text{ г/л}$$

05

5.4



05

$$270 = 171$$

5.5.

$$2018 : 2 = 1009$$

$$128 - 3 = 122$$

1005

$$1009 \cdot 3 - 3 - 3 = 1000$$

$$122 : 2 = 61$$

$$1000 : 2 = 500$$

$$61 - 3 = 58$$

$$500 : 2 = 250$$

$$58 : 2 = 29$$

35

$$250 : 2 = 125$$

$$29 : 3 - 3 - 3 = 20 : 2 = 10$$

$$10 : 2 = 5 - 2 = 3$$